



## DETERMINATION OF SYNTHETIC AMINO ACIDS (METHIONINE, THREONINE, TRYPTOPHAN) IN FODDER ADDITIVES

Lumex Method M 04-63-2016

### INTRODUCTION

The method is used for the determination of the mass fraction of free methionine, threonine, and tryptophan in **fodder additives**.

For the determination of the mass fraction of methionine, threonine, and tryptophan in feedstuffs, compound feeds, foders, premixes, and all types of feed raw materials use the method M 04-38-2009 (Lumex Instruments kit, order No 0300002027).

For the determination of free lysine in fodder additives use the method M 04-87-2016 (Lumex Instruments set, order No 0300002726).

For the determination of methionine hydroxy analogue (HMTBa) in fodder additives use the method M 04-83-2014 (Lumex Instruments set, order No 0300001888).

### MEASUREMENT METHOD

The measurement method is based on capillary zone electrophoresis with direct UV detection at the wavelength of 200 nm.

### MEASUREMENT RANGE

The measurement ranges for components are **80–100%**.

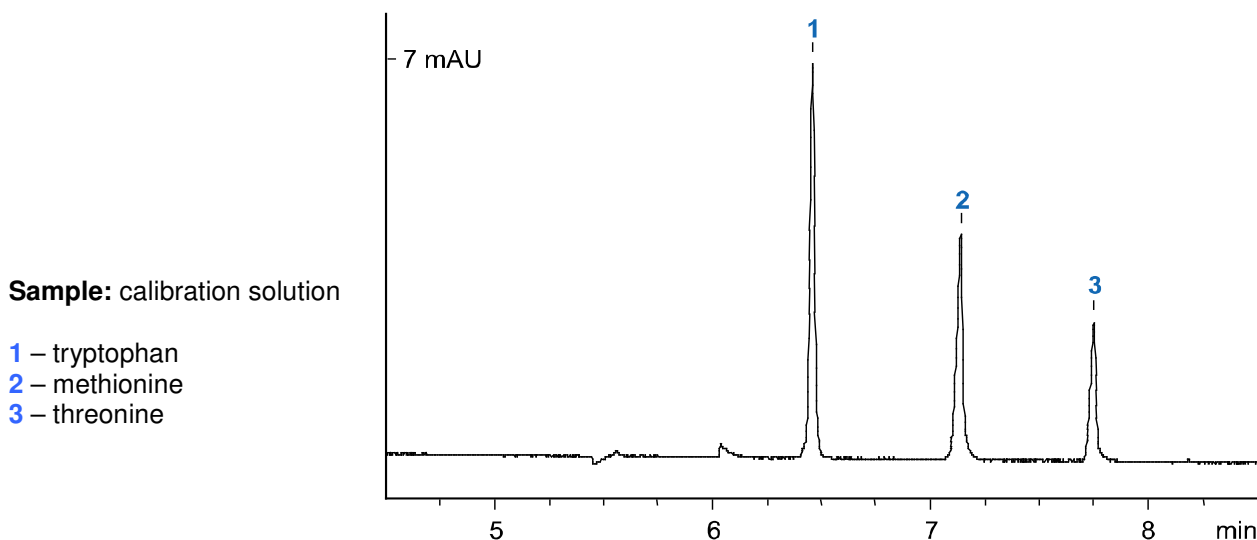
### EQUIPMENT AND REAGENTS

The CAPEL capillary electrophoresis system is used in measurements. Data acquisition, collection, processing and output are performed using a personal computer running under WINDOWS® XP/7/8/10 operating system with installed dedicated software package ELFORUN.

Lumex Instruments set, order **No 0300002780**.

### EXAMPLES OF REAL ANALYSES

**BGE:** borate  
**Capillary:**  $L_{\text{eff}}/L_{\text{tot}}$  65/75 cm, ID 50  $\mu\text{m}$   
**Injection:** 300 mbar x sec  
**Voltage:** + 25 kV  
**Temperature:** + 30 °C  
**Detection:** 200 nm



The contents on this paper are subject to change without notice.

To get more specific information, please contact the representative by [sales@lumexinstruments.com](mailto:sales@lumexinstruments.com)